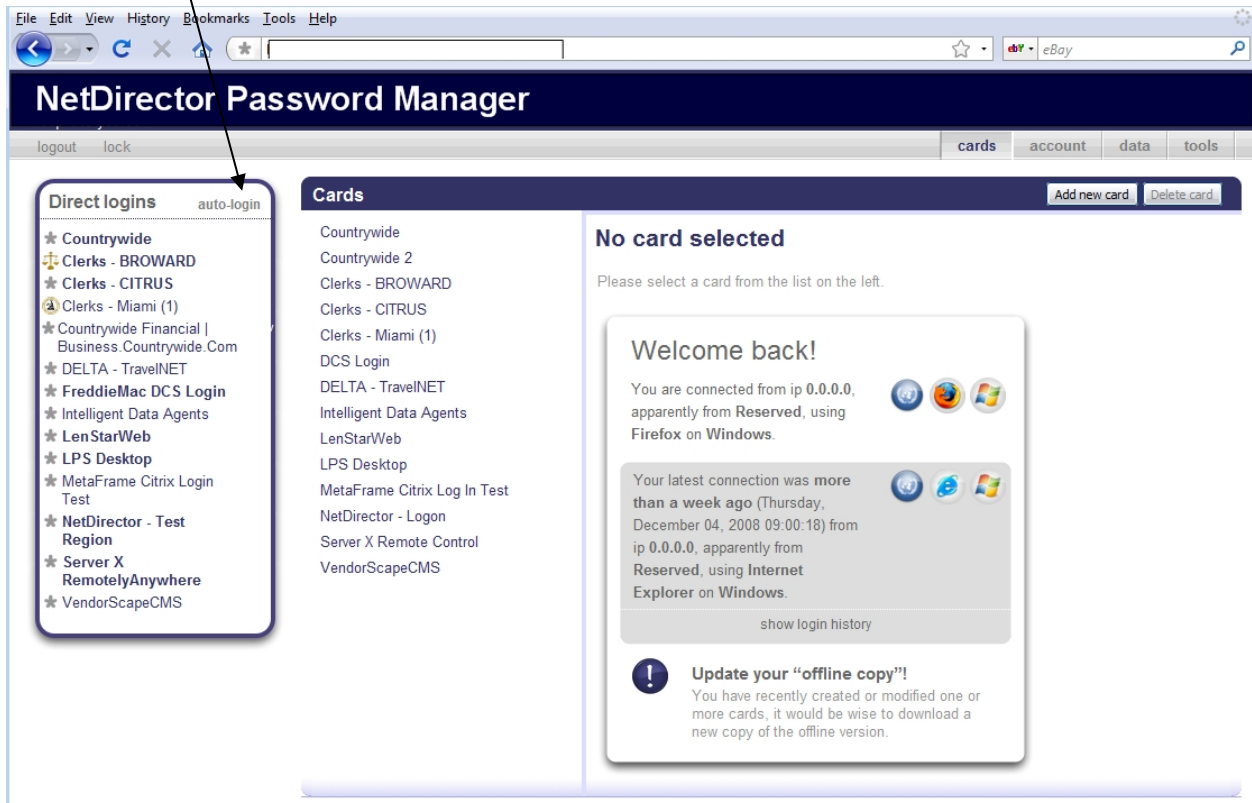


Password Manager

We are confident that no other product matches our standards for security that we can release the source code for anyone to review. That's how much we believe in this product.

Password Manager is an anonymous online password manager that can be installed locally or as a SaaS software as a service solution. It is the most secure implementation of secure applications available today. And with local encryption within the browser it guarantees that no one except you can read your data, not even administrators of the software.

Just One Mouse Click and you're Automatically Logged In – That's A Single Sign-On Solution



It's that easy – start Password Manager and enter your master passphrase. You are automatically logged into your selected online accounts like vendors, clients, county, servers, email, bank accounts, credit cards, utility or Intranet accounts – without any additional clicks of the mouse.

Features of Password Manager

- ⇒ Secure, Simple and SaaS Software
- ⇒ Hosted or Private Install
- ⇒ Zero-Knowledge Web Application
- ⇒ Increases Productivity Across Entire Organization
- ⇒ Single Sign-On Solution, with Auto-Login to all Your Websites
- ⇒ A Digital Vault for Confidential Data
- ⇒ Reduces Audit Risks to Companies and Shows Compliance

Trust and Transparency

We have gotten use to trusting third parties with our data (photos, documents, spreadsheets . . .) not realizing that our data can be read by the web application provider. Not so, when you use Password Manager – your information is secure. And, because Password Manager is designed for transparency, the whole source code of the application is freely available for security reviews.

More Security Features

Password Strength Indicators – Using a password manager is not only convenient, it's an effective way to adapt better security practices without too much stress. Password Manager provides visual indicators to gauge the strength of your passwords.

Application Locking – Password Manager allows you to manually or automatically lock-up the interface and the data.

SSL Secure Connection – All data is encrypted and decrypted inside your browser and only encrypted data is ever sent over the Internet. And, to make data even more secure, the encrypted data is delivered via an SSL connection.

Efficiently Executes JavaScript Code – By leveraging the capabilities of modern web browsers, Password Manager can efficiently execute JavaScript code. Password Manager is simply in charge of delivering the Ajax code to your browser and then storing your data in an encrypted form on Password Manager servers. That means all encryption and decryption operations take place inside your local browser.

One-time Pass Phrase – When logging into Password Manager from public computers it's strongly advisable to use one-time pass phrases.

Mask for Password Fields – Password fields are displayed with the usual stars, but if needed, users can copy the actual password to the clipboard by simple selecting the stars.



Password Generator – Password Manager has a very simple and secure tool to generate long and complex passwords – so you never have to use the same password twice.

Automatic Updates – Cryptographic algorithms evolve with the times with Password Manager you can upgrade its crypto foundations without the users even noticing it.

Online or Offline – With Password Manager Your Confidential Data is Always at Hand and Secure

Because we understand the inconveniences an offline event causes its users, we have implemented an offline feature into Password Manager. With just one click you can transfer all your encrypted data from Password Manager servers to your hard disk and create a read-only version of Password Manager to be used when you are offline. And, the read-only version is as secure as the read-and-write. So if you are traveling, Password Manager is always accessible from anywhere with total security. And, because Password Manager is so secure we have provisioned Internet cafes to allow a onetime passphrase to ensure no one in public can intercept your passwords.

Import and Export – It's Your Data

Password Manager allows the user to move data out of Password Manager anytime and provides bulk data import from a variety of formats – CSV, Excel, Keepass, Roboform, and many more.